

Red House® Ladies 3/4-Sleeve Nailhead Non-Iron Shirt. RH690



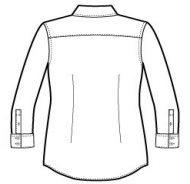
Thoroughly updated, this crisp nailhead shirt has a silky feel and a wrinkle-resistant finish for exceptional non-iron performance. 4-ounce, 60/40 cotton/polyester with taped seams, RH engraved buttons and a shirttail hem to elevate the office-ready look. Open collar with a covered placket. Front and back darts. Cuffed 3/4-sleeves. Hem can be worn tucked or untucked.

CARE INSTRUCTIONS

Machine wash cold with like colors, only non-chlorine bleach when needed, tumble dry low, warm iron if needed.



front



back

HOW TO MEASURE



BUST
With arms down at sides, measure around the upper body, under arms and around the fullest part of the bust.

SIZE CHART

	XS	S	M	L	XL	XXL	3XL	4XL
Size	2	4/6	8/10	12/14	16/18	20/22	24/26	28/30
Bust	32-34	35-36	37-38	39-41	42-44	45-47	48-51	52-55

COLOR INFORMATION

Black PMS NTR BLACK C	Blue Pearl PMS 7451C	Ice Grey PMS NO MATCH	Mediterranean Blue PMS 7687C	Pink PMS 517C	White PMS WHITE